



HUMANITY**TECH**  
WE ARE

Let's create  
an intelligent  
ecosystem  
**Together**



Urban  
furniture



Intelligent



Innovation





## Quality

Our products are of superior quality in terms of design, service and materials that we use to execute projects.



## Innovation

Our urban furniture holds innovative solutions to meet your contemporary technical needs.



## Ecosystem

Once installed, all our products create an intelligent ecosystem through their means of communication and aesthetic coherence.



## Connectivity

All of our products are equipped with wireless connectivity technologies.





## Innovative projects

The advanced urban furniture from Humanity-Tech offers intelligent anchoring solutions that promote dynamism in interaction and responsible consumption between users and businesses. We provide a package that presents a stylish and comfortable resting area, offering mobile device charging, wireless connectivity powered by our partners and the ability to interact with media content on an advertising screen. Our offering is presented to sponsor partners during various events held indoors or outdoors, which can take place throughout the year.

## Applications

	City	Suburb	Park	Factory	Events	Rental	Portal access
Connected bench							
Kairos							
Arch							
Tourist kiosk							
Station							
Mobile phone charging station							



# Connected bench

## Description

Lightweight and compact, it is made from durable and eco-friendly materials. The Humanity-Tech bench doesn't rust; it comes with a 5-year warranty and a useful lifespan of nearly 25 years. The integrated LEDs on the bench can serve as safety features for pedestrians during both the evening and night time. They can also be customized according to the promoter's preferences and wishes. Inductive (Qi) charging is also highly appreciated by users.

## Places of use

The bench is primarily used in cities, parks and gathering spaces. It can also be rented and utilized during various events.



# Kairos



## Description

The Kairos product family offers a real-time location system (RTLS) that enables the tracking of devices within indoor environments. These products are also fully configurable, serving purposes such as ensuring worker health and safety, asset tracking and floor planning within factories.

## Places of use

The system can be used in various fields such as construction and manufacturing environments.



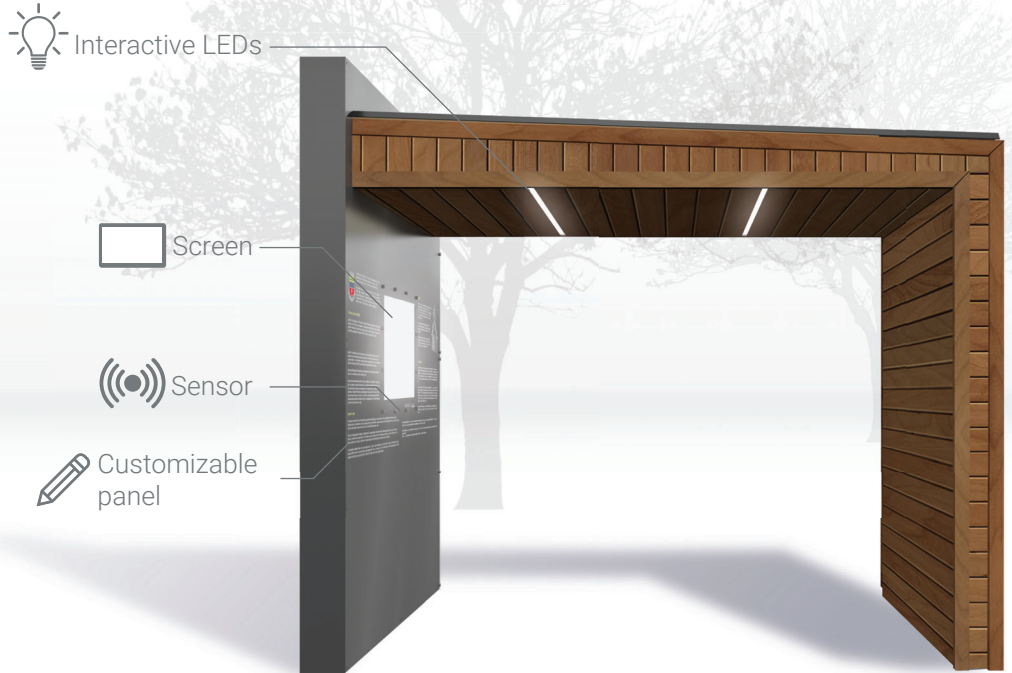


## Description

The arch is an intelligent structure that monitors the entrances and exits of an area. It also enables the display of advertising messages or simply informative messages. It's also possible to customize it for tourism information or other purposes on the metal panels.

## Places of use

The arch can be positioned at multiple entrances where passages take place such as parks and event venues.



# Tourist kiosk



## Description

The tourist kiosk is a facility designed to enhance the tourist experience by providing information such as activity recommendations, itineraries, and details about local events. By offering this service, visitors have quick and personalized access to essential information to explore the region in multiple languages. They contribute to making the visit more convenient and enriching for travelers

## Places of use

A good location for the kiosk is crucial for its proper functioning, such as places where numerous events take place, a location with a high flow of pedestrians, or a central point connected to local tourism.





## Description

The station serves as the control point for a connected urban environment. It will act as an access center for all connected elements in the vicinity, whether they are based on Humanity-Tech technology or elements provided by external sources. The system is fully configurable.

## Places of use

The station can be installed in places where public transportation is available, making it ideal to position it in both urban and suburban areas.



# Cell phone charging station



## Description

The mobile phone charging station allows the safe charging of portable devices. Six lockers are available on each side of the product. Users can lock them with their own security code to ensure the safety of their device.

## Places of use

The product can be used in various locations such as colleges, universities, parks, shopping malls or wherever you desire. It can also be rented and used for temporary interactive events.

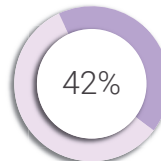
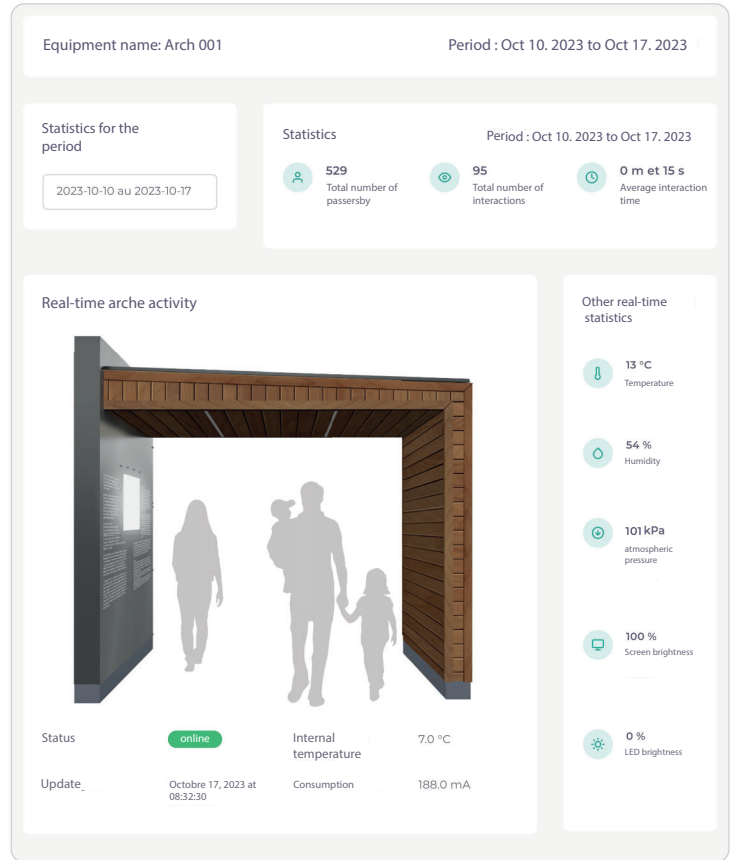
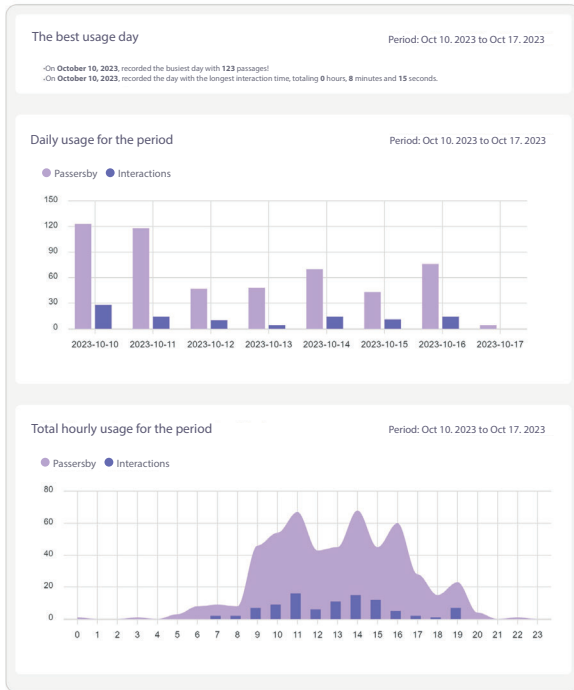


# Portail Humanity-Tech

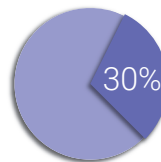
## Real-time viewing

For most Humanity-Tech products, it is possible to have a real-time visual representation of the usage of peripherals. Various data points can be visualized, such as the presence on the product and the utilization of its functions. Additionally, for some products, it is possible to illustrate the flow of traffic around the product and determine usage trends.

The illustration will change based on the current use of the product, for example, the presence of people, the status of lights, and the use of phone charging stations.



of passersby are detected between 11 a.m. and 2 p.m.



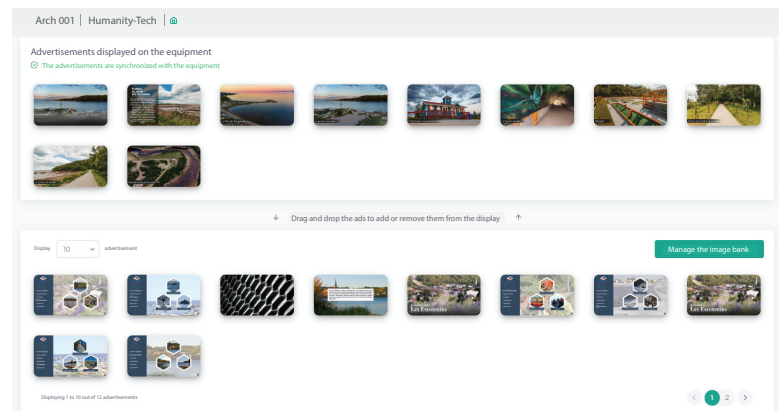
of the interactions were detected on October 10, 2023

## Advanced date collection

In addition to being able to visualize data in real-time, it is possible to gather data over a longer period and determine a more precise pattern of usage. By having more than one product, we can also identify points of interest for users within a predefined area.

## Portal control

For products that have one or more screens, you can easily manage the display yourself through the Humanity-Tech portal. You can also customize your products individually according to your preferences and needs.





HUMANITY**TECH**  
WE ARE

1000, rue de l'Express, Terrebonne (Québec) Canada J6W 6K9  
(514) 894 - 8007 [info@humanity-tech.com](mailto:info@humanity-tech.com)  
[www.humanity-tech.com](http://www.humanity-tech.com)